












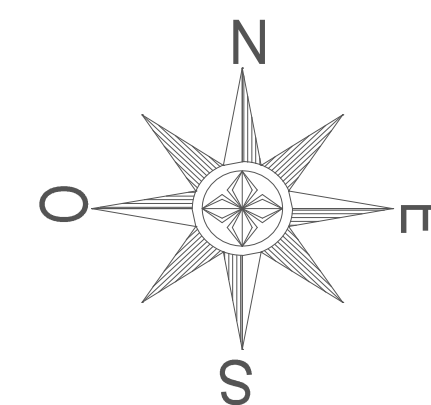
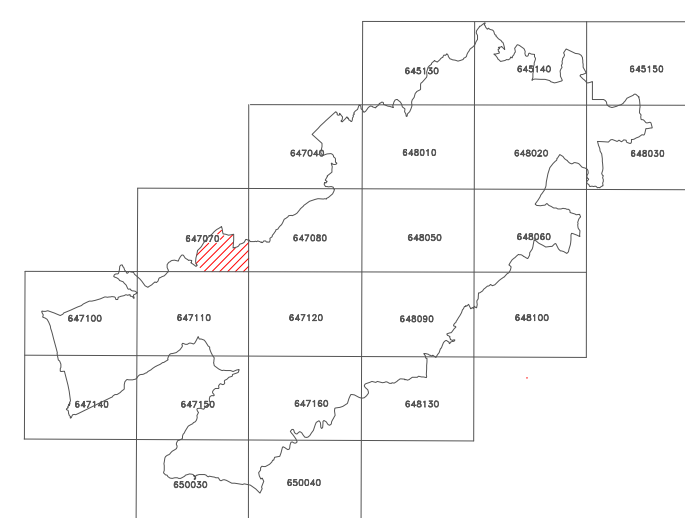
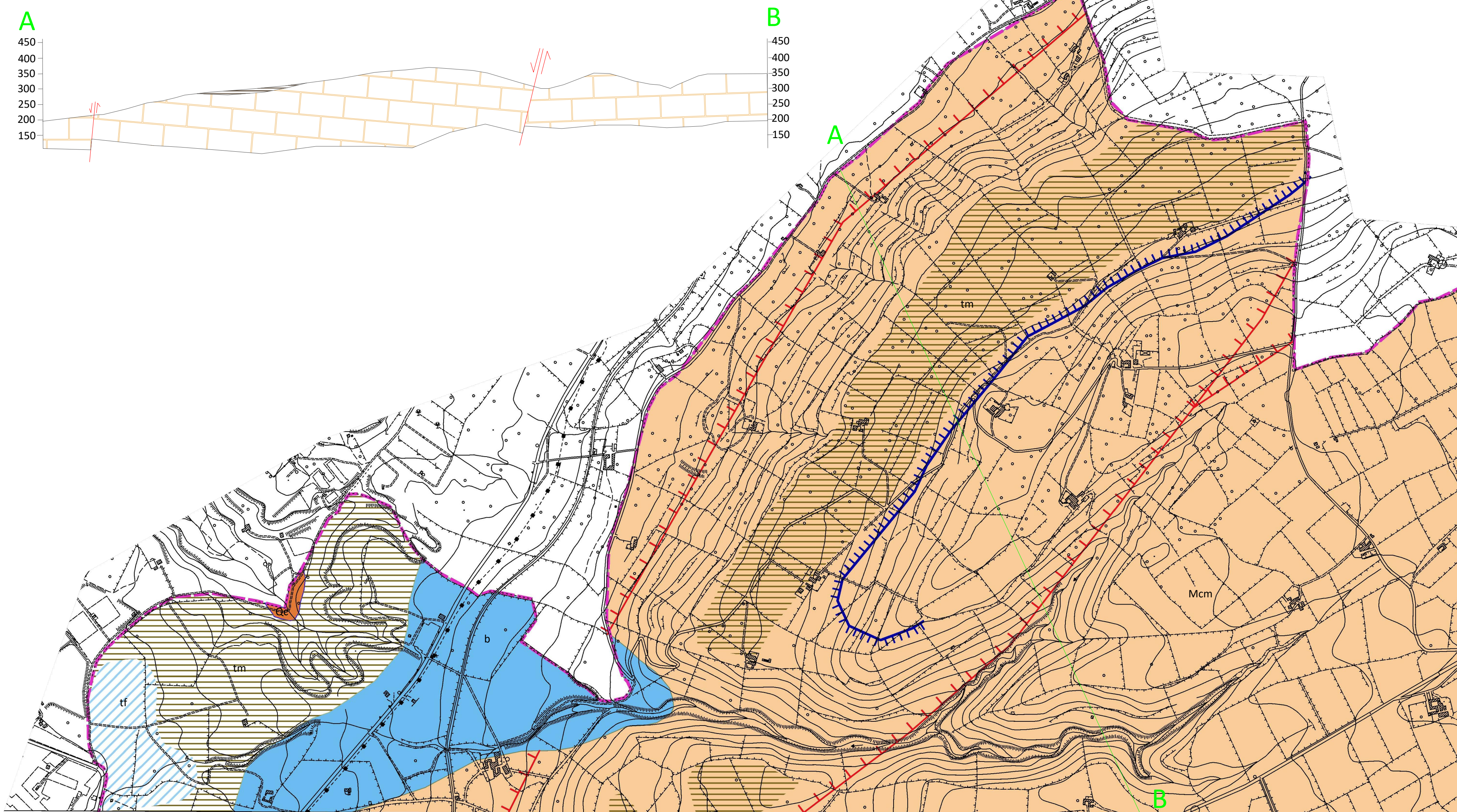


LEGENDA

-  **CONOIDI DI DEIEZIONE (b)** Pleistocene medio-superiore: Chiazze ad elementi carbonatici subarrotolati con scarsa matrice costituita da sabbie carbonatiche e limi fini.
-  **TERRAZZI FLUVIALI (tf)** Alluvioni fluviali terrazzate, distribuite in vari ordini, costituite da ciottoli carbonatici arrotondati in abbondante matrice sabbiosa. Spessori oltre 10 metri.
-  **TERRAZZI MARINI (tm)** Pleistocene superiore: spianate di abrasione con vari depositi costituiti da limi di calcareniti a grana grossolana (parchina).
-  **CALCARENITI (Oc)** Pleistocene inferiore: Calcareniti bianco-giallastre. Spessore massimo intorno ai 40 metri.
-  **F.NE RAGUSA M.BO IRMINIO (Mcm)** - Burdigaliano sup. - Langhiano inf.: calcareniti grigie alternate a strati calcareo-marnosi. Spessore fino a 60 metri.
-  Orli di terrazzi marini
-  Faglie (i trattini indicano la parte ribassata)
-  giaciture orizzontali
-  giaciture 8° - 10°
-  giaciture 10° - 45°
-  giaciture 45°-85°
-  giaciture verticali
-  Traccia di profilo geologico



SEZIONE GEOLOGICA scala 1:10.000 - Rapporto altezze/distanze 1/1



COMUNE DI RAGUSA



PIANO REGOLATORE DI RAGUSA

SOGGETTI ATTUATORI:
COMUNE DI RAGUSA

IL R.U.P.
ARCH. MARCELLO DIMARTINO

IL TECNICO INCARICATO
GEOL. SARO DI RAIMONDO

STUDIO GEOLOGICO ELABORATO AI SENSI DELLA CIRCOLARE
A.R.T.A. SICILIA N°3 DEL 20/06/2014

UBICAZIONE:
AREE RICADENTI NELLA C.T.R. 647070

TAVOLA

N18

FASE PRELIMINARE (A1)
CARTOGRAFIE DI ANALISI (A1c)

ELABORATO :
CARTA GEOLOGICA

SCALA 1:10000

C.T.R. 1:10.000 n° 647070 "Vittoria sud"